

Guidelines for handling variables in repeated contexts

Romain Tailhurat - Making Sense



A collective work

- Why?
 - Managing repeated measures over time in order to
 - improve discovery and comparison
 - Enable better metadata management
 - Support harmonisation of data

A collective work

- Who?
 - Domain experts
 - CDSP
 - CLOSER
 - Constances
 - France Cohortes
 - Insee
 - Making Sense as a coordinator

A collective work

- How?
 - Opportunistic meetings (in-person and remote)
 - Open documentation ([Varese](#))

What has been done so far?

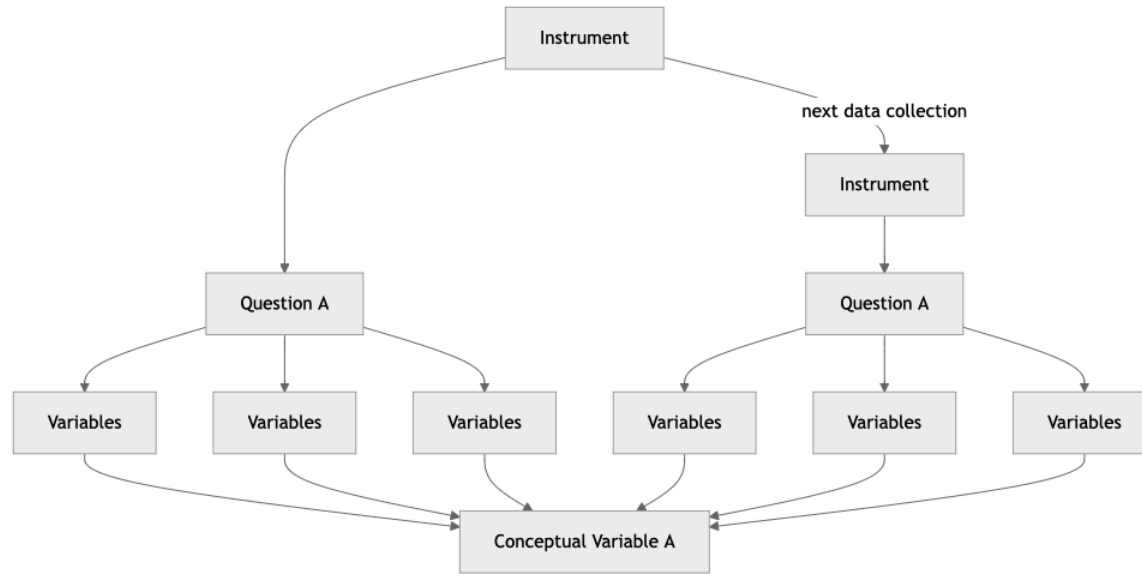
- EDDI23 talk
- Identify more use cases
- Describe tools and patterns
- Draft a guideline document

Use cases

- Original and new uses cases from Constances, Insee and CLOSER
- and new ones from new partners, CDSP, France Cohortes

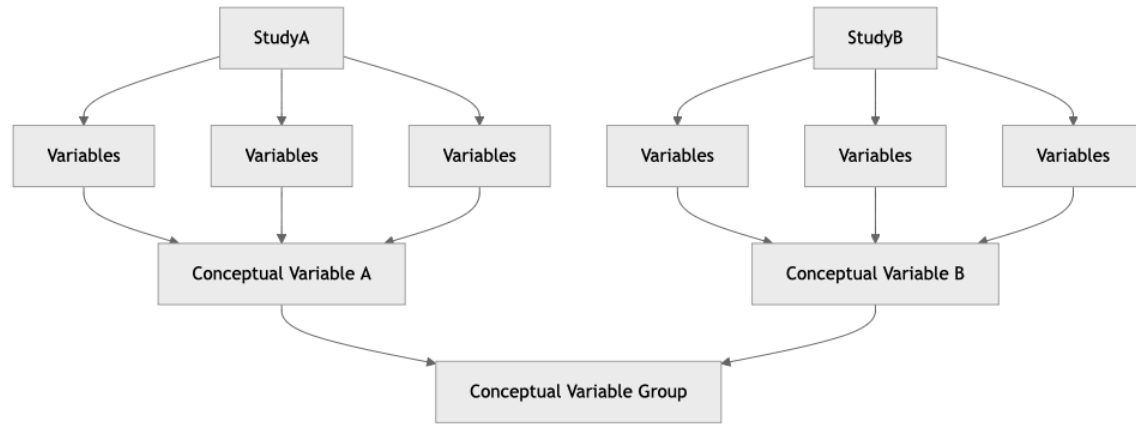
CLOSER

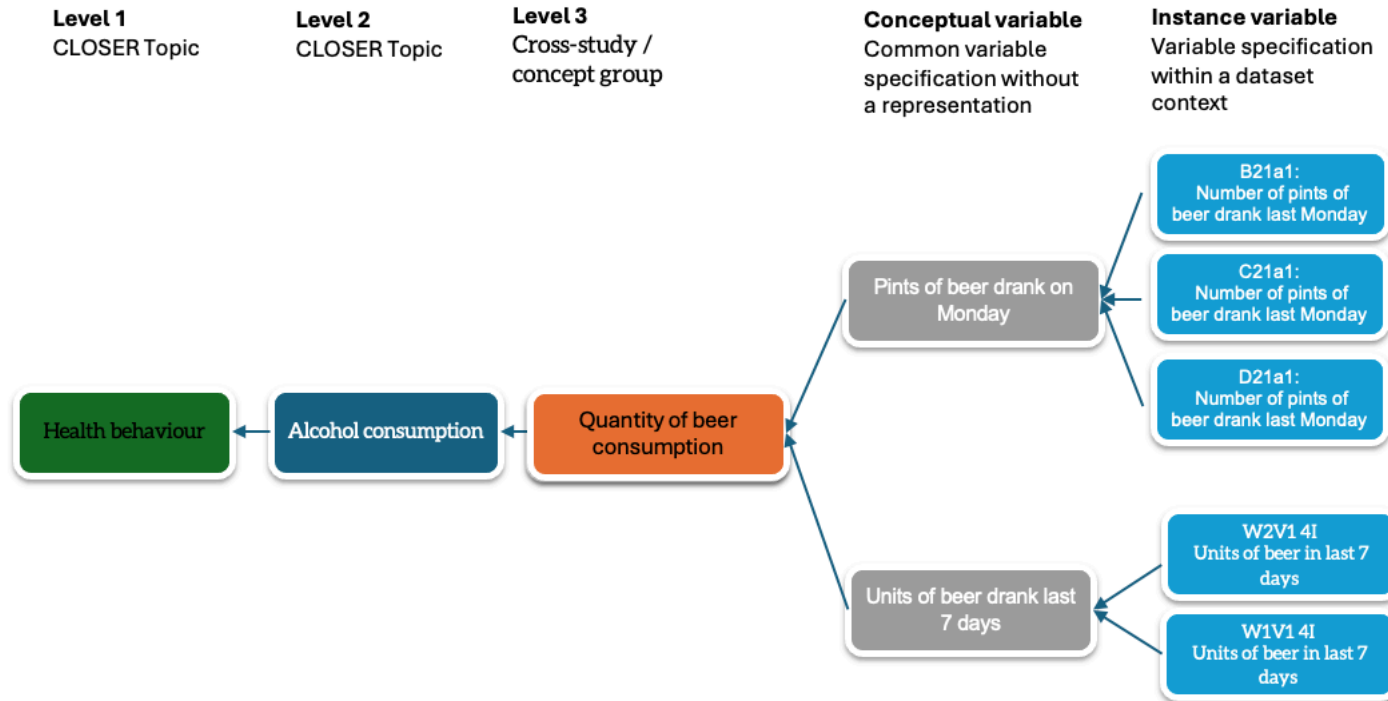
- Within studies
 - Variables are referenced by the same conceptual variable within a single longitudinal study
 - Definition of a conceptual variable within a study is strongly related to the question item within a questionnaire



CLOSER

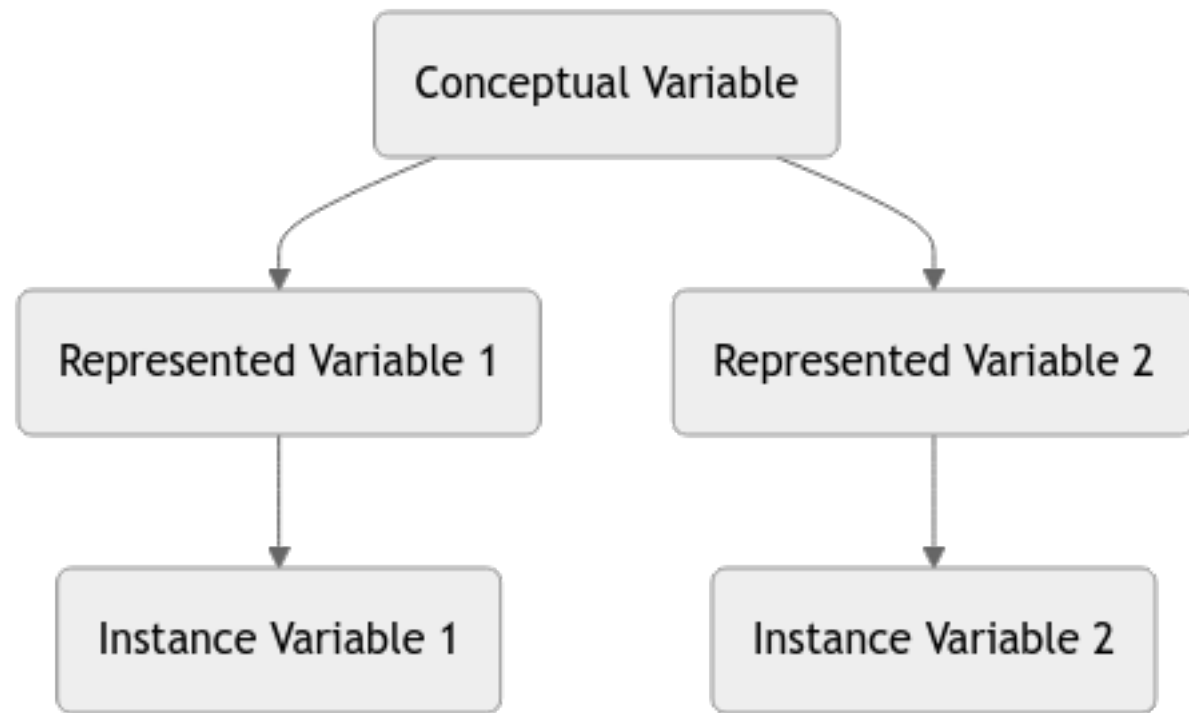
- Across studies
 - Cross study conceptual variable groups are created which reference study level conceptual variables
 - This enables a researcher to find similar variables across longitudinal population study (LPS) for potential harmonisation





Constances (wip)

- Documenting changes in response domains



Represented Variable 2

Based on

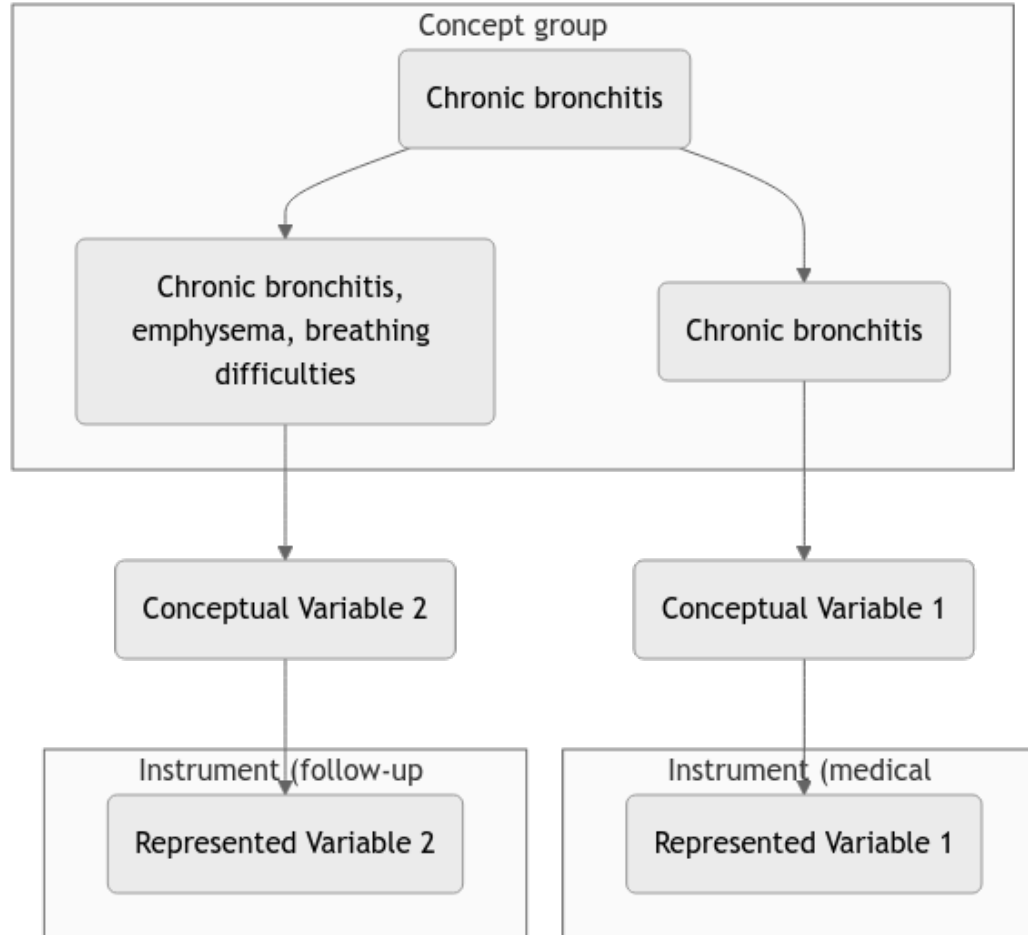
Represented Variable 1



(Gesis) IsBasedOn.DifferentResponseSchema

Constances (wip)

- Documenting change in concepts

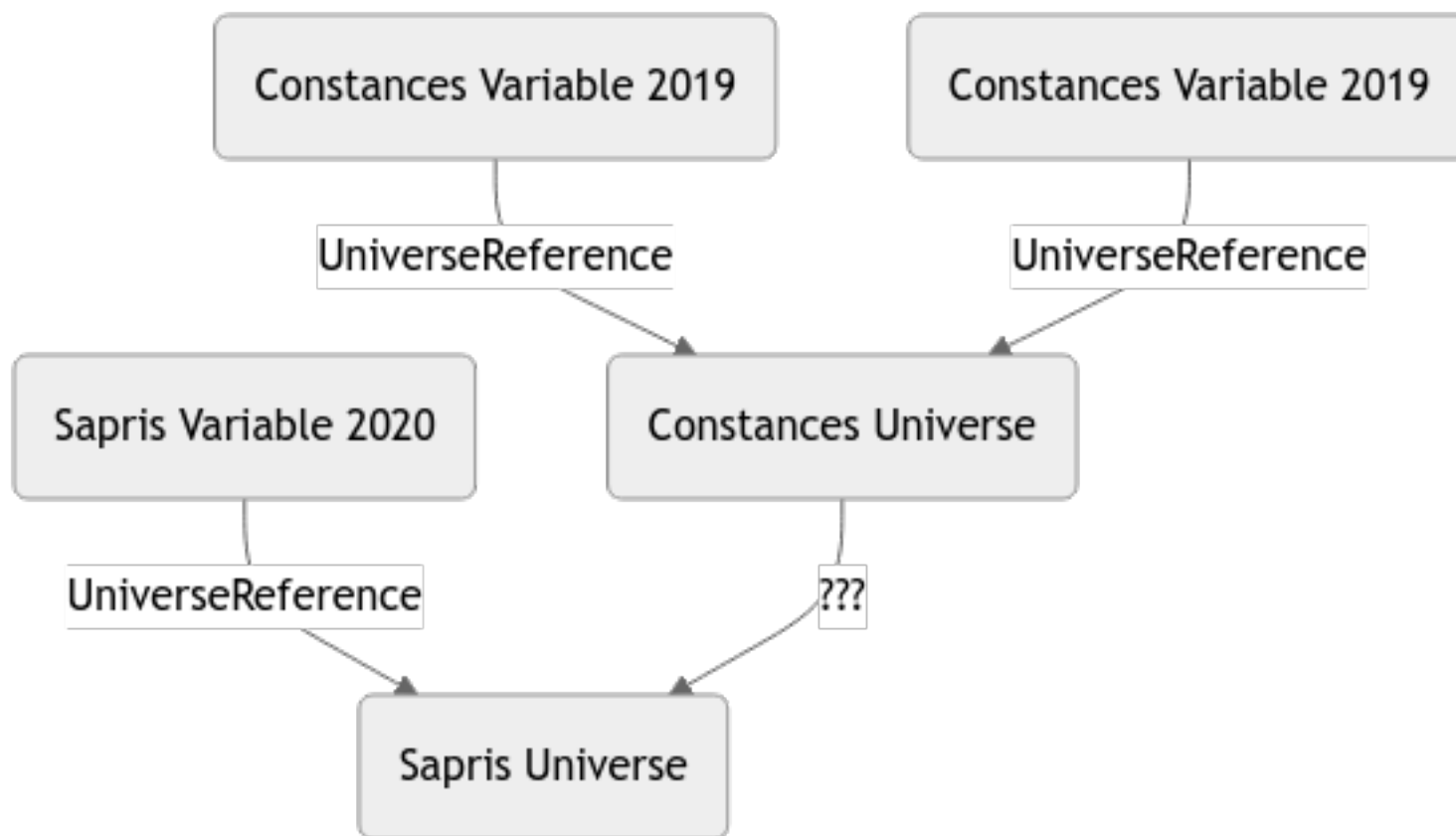


Constances (wip)

- use of SKOS to provide qualified relations between concepts?

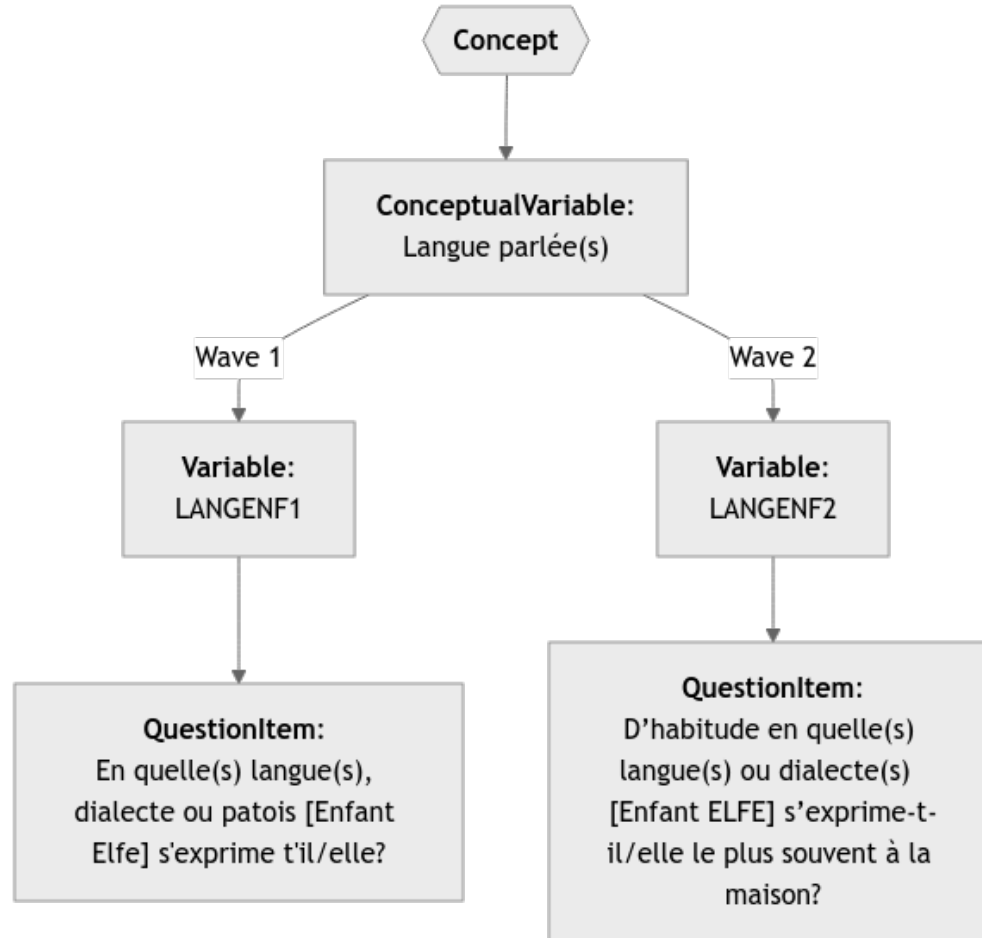
Constances (wip)

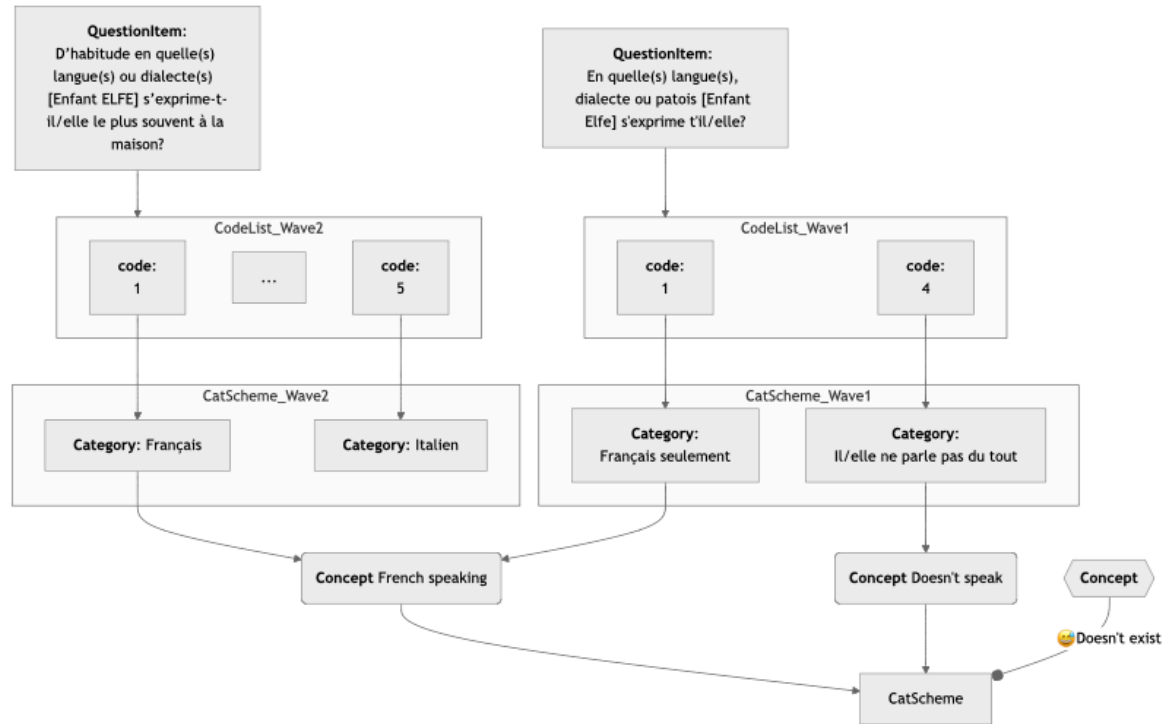
- Documenting change in universe ✖

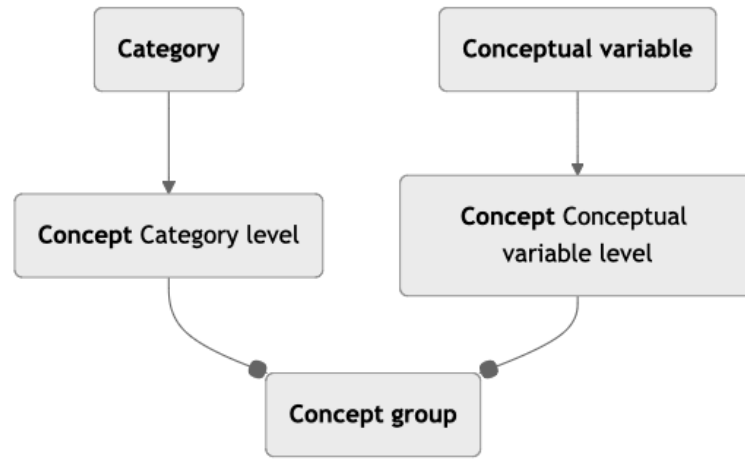


France Cohortes (wip)

- Changes in categories







How to handle granularity?
🤔

Patterns

- Grouping at the concept / variable level
- Grouping at the study level
- Direct qualified relations between variables
- Indirect relations using the variable cascade (harmonisation at the concept level)
- Linking universes using subuniverses or BasedOn attribute (proposed extension to Gesis vocab)

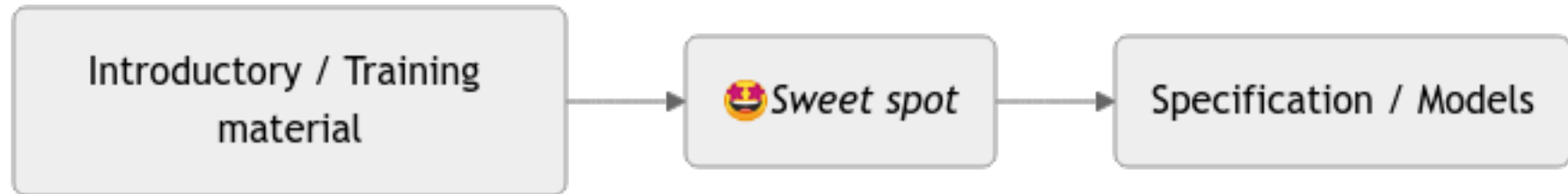
Pending issues

- Relations between universes?
- Extension of the BasedOn links between variables
- Provide clues on which patterns to use?
 - cf. the Whys? Discovery/comparison, management, harmonisation

Next steps

- Finish and publish the guidelines document
 - Publish on ddialliance.org?
- Work on issues
- Recruit!

Sweet spot



Thank you!